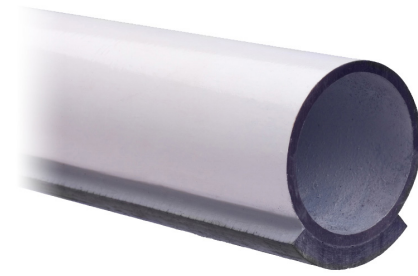


ProTek Composite Wear Pad

ProTek Composite Wear Pads are designed to prevent metal-to-metal contact in piping systems. They effectively isolate the pipe from contact with I-Beams, guides or concrete supports. These areas are the most susceptible to corrosion and cost millions to repair and maintain. Our wear pads are the most cost effective solution to piping system corrosion.

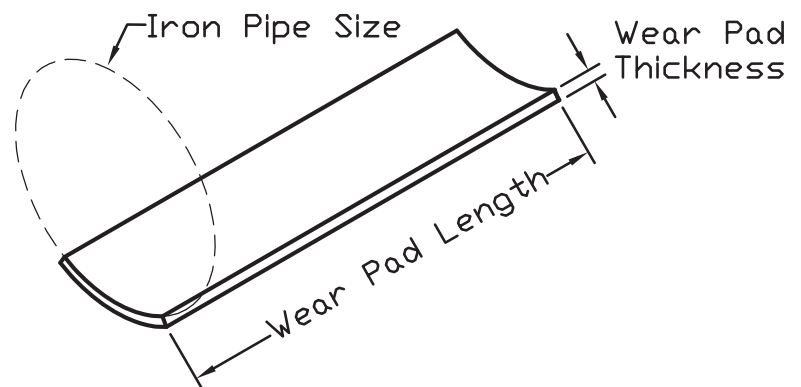
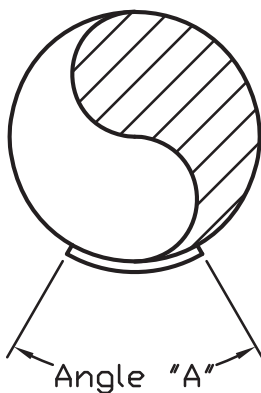
Benefits

- Low cost of installation: no welding, hot work permits or highly skilled personnel required.
- Product minimizes maintenance and operational costs throughout the lifetime of the piping system.
- Wear Pad inside diameter (ID) precisely matches outer diameter of pipe.
- Wear Pad ID is pre-roughened for exceptionally high epoxy-to-wear pad bonding strengths as verified by ASTM D5528-01.
- APP provides on-site installation training and inspection services for all fabricators, constructors and end users that install our products at no charge.



Specifications

Composition	APP-VEFR
Max Compressive Strength	53,000 lbs. per ASTM E8
Temperature Range	-320°F to +400°F
Installation	EX-100 Epoxy System
Required Accessories	Epoxy, static mixing nozzle, manual dual epoxy applicator
Custom Manufacturing	Available in any thickness, degrees of coverage and length.



NOMINAL IRON PIPE SIZE		PAD THICKNESS		STANDARD ANGLE "A"
inches	millimeters	in.	mm	
UP to 4"	UP to 102	1/4"	6	90°
6" to 10"	152 to 254	1/4"	6	60°
12" to 20"	305 to 508	1/4"	6	30°
24" to 48"	610 to 1220	3/8"	10	30°